

FIG. 1.

BEST AVAILABLE COPY

+



+

2/12

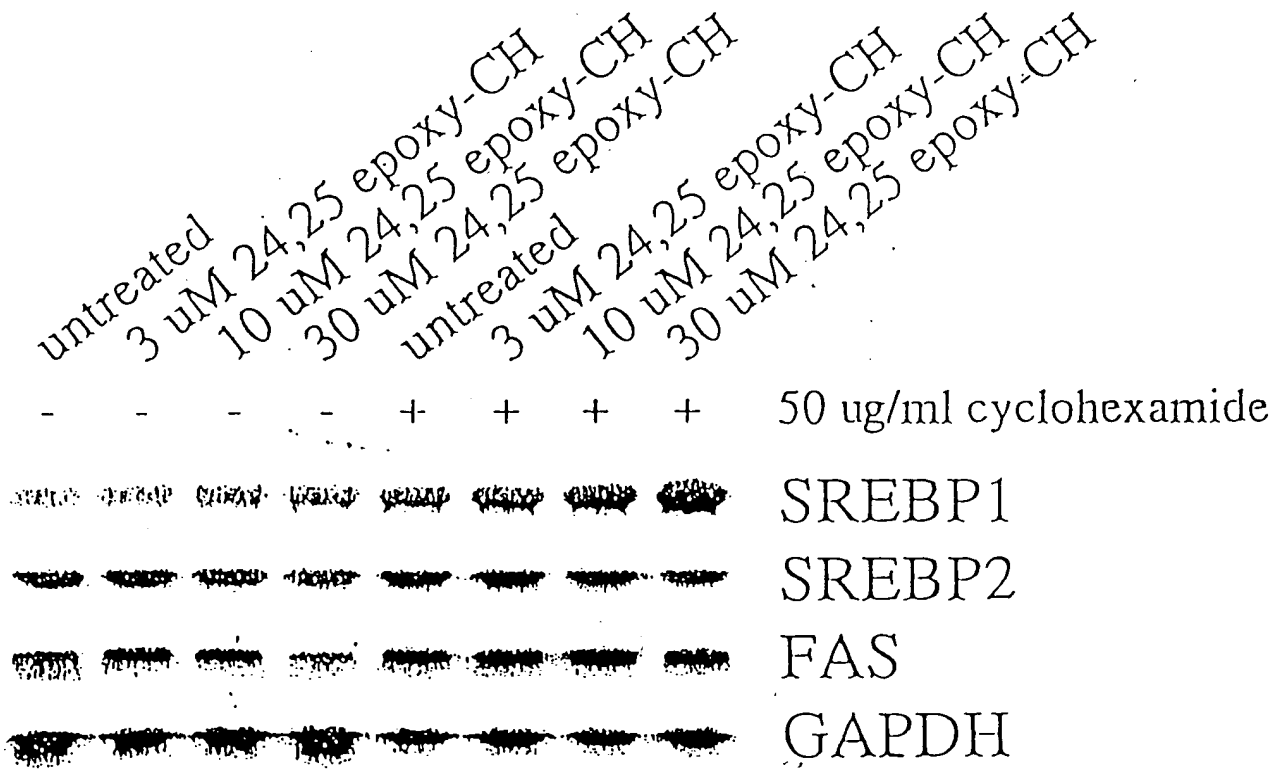


FIG. 2.



3/12

+

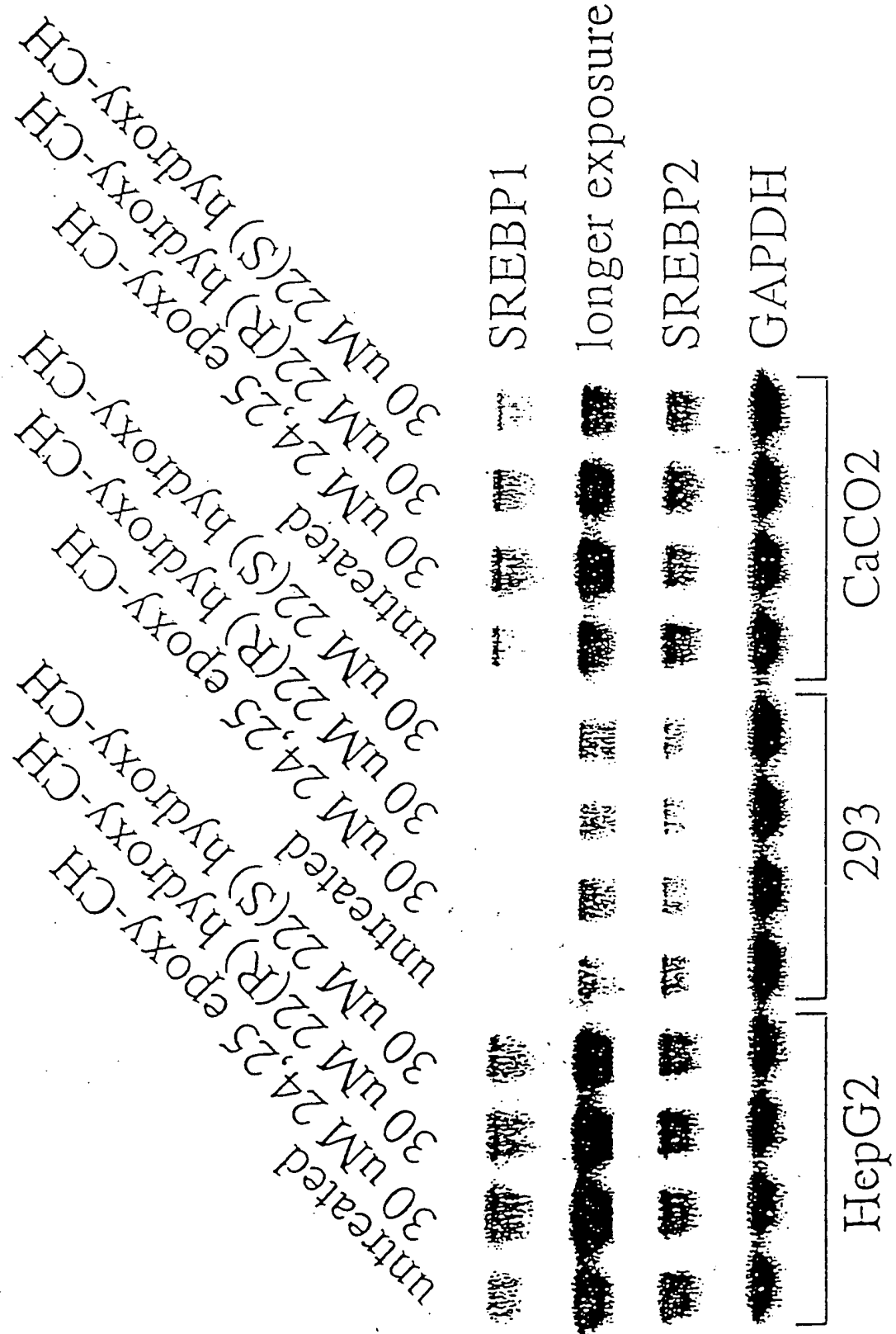


FIG. 3.

BEST AVAILABLE COPY



+

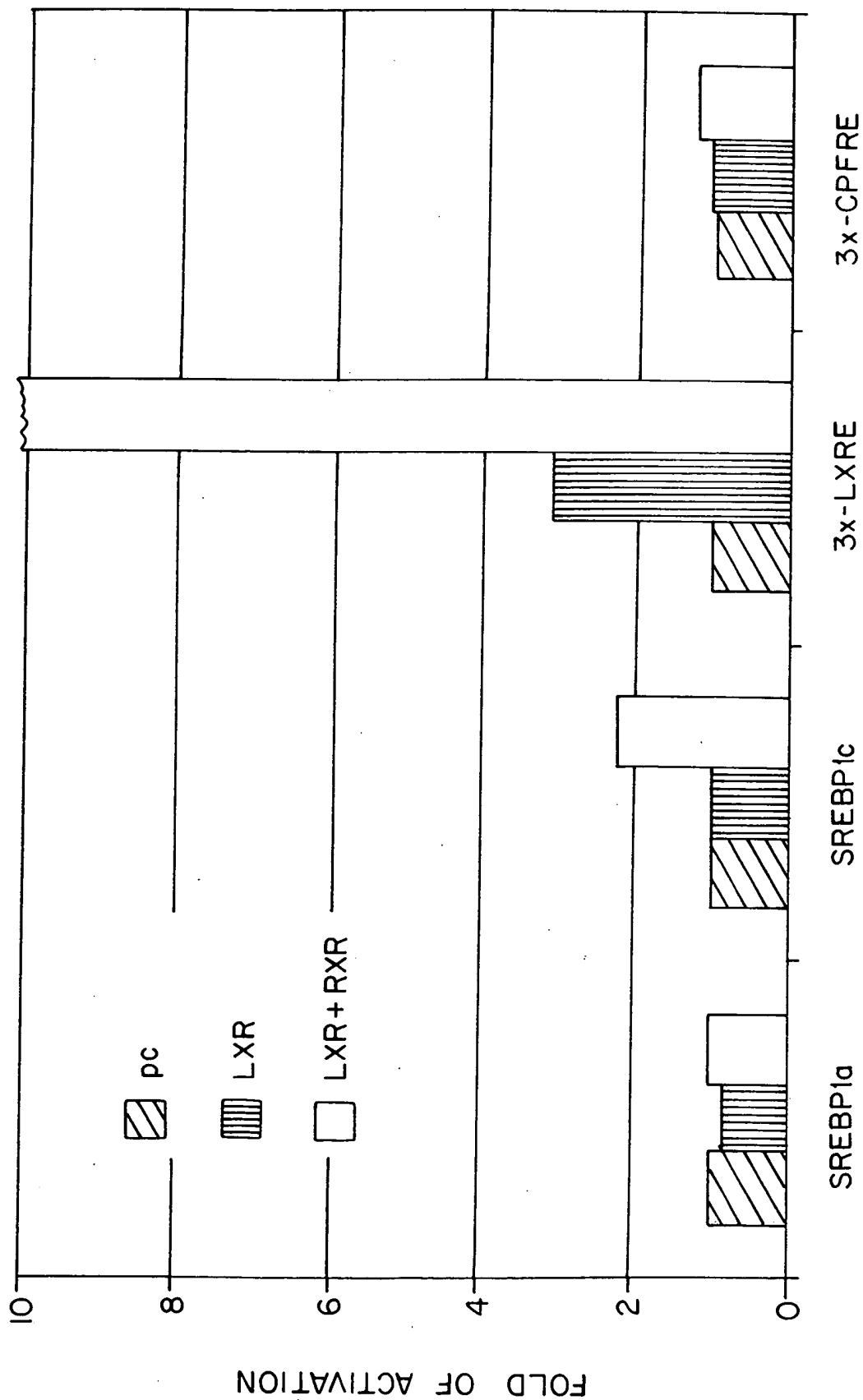
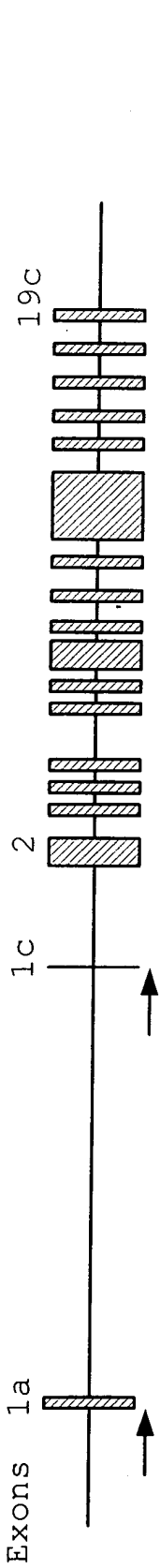


FIG. 4.

BEST AVAILABLE COPY



in SREBP1c promoter

TGGGACCTGCCTGGCATGTGGAAGGGGCTTGGGGTGCAGCTGTGTCCCTGGCCCGAGCACTGCCACACCCCTCGGT
TGACCTCACTTTGCGCTCTGGAGGGCAGAAACCTCTGAGCCAGCTCTCAGGGATACCTTTTTCCTCGATGGCCTT
GGAACTGCCCTCGCCTATCTCTGAGCCCTGCCCTGCCCTTCCCCAAAGCCATCATAGACCCCTACCTCCTAT
ATGAGCCTGGCCATGGAATGCTTGGGGTGAGAGGGACCCCATAGGGGCTCCGGGCAATTGTAGGGGGCTAGGTGG
TGCAGAGCCCCACCTGTGGCAGGGTTTACATGCCGCCACCCCTGCCCTCTTGGGTAGCTGGGGTCAGAAGGG
AGCCCTCACTCTCTGCATCTTAGTTTCTTACATCTAAAATGCTATTATATGCTGCTGAGGGTGGTTGGGG
CGTGCAGTAAGTGGAGAGAAGCCCTTCAGCCAGAGGACCCCATATGCTTAAACATCCAGACACCAAGGGCCACTCA
CAGCAGCCGGCTTGTTTCGTATCCCTTTTGGGTGAGGAACTGGGGACGCTGGACTCCAGATCTCCAGGAGGCC
CAGACTAGCGGGGAAGGCGCTCAGCCCTGAGCTGAAAACCTGAAATTTCTAGAATAAACCCAGGCCCTCCCTCC
TGGGCAGCGGGGAGGGTAGGGCCCAACGGCCTGGACGCCCCCAAGGGCGGCGAGATCGCGGAGCCATGGATTGCA
CGAAGgtattttggaggcctccccac

FIG. 5.

BEST AVAILABLE COPY





6/12

+

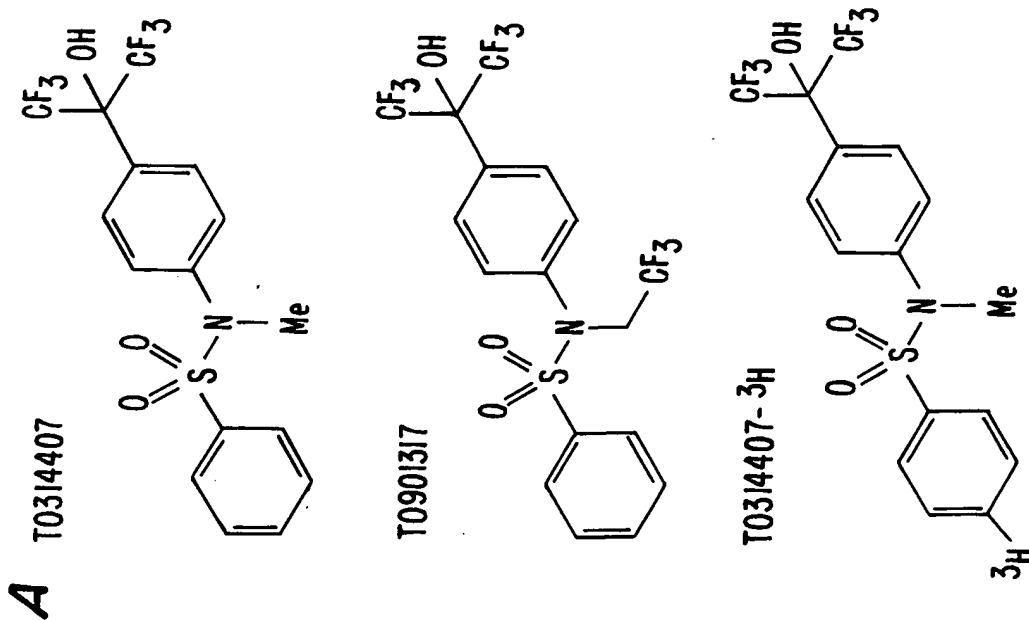
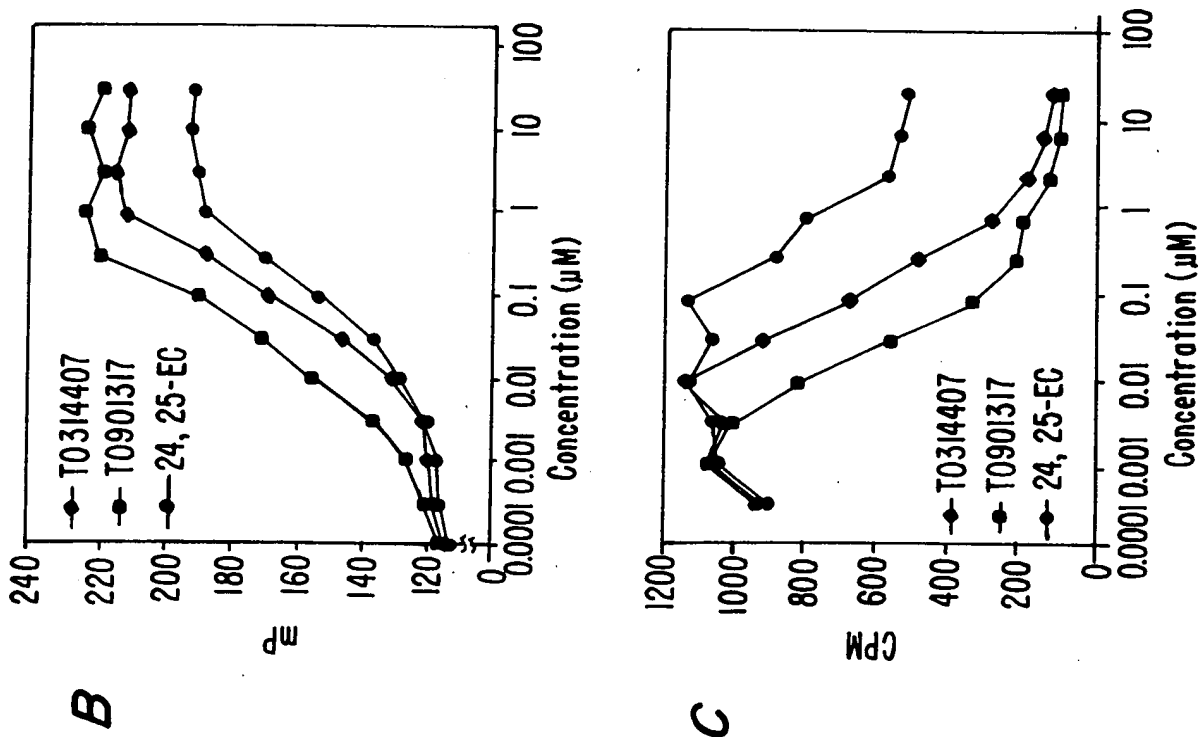


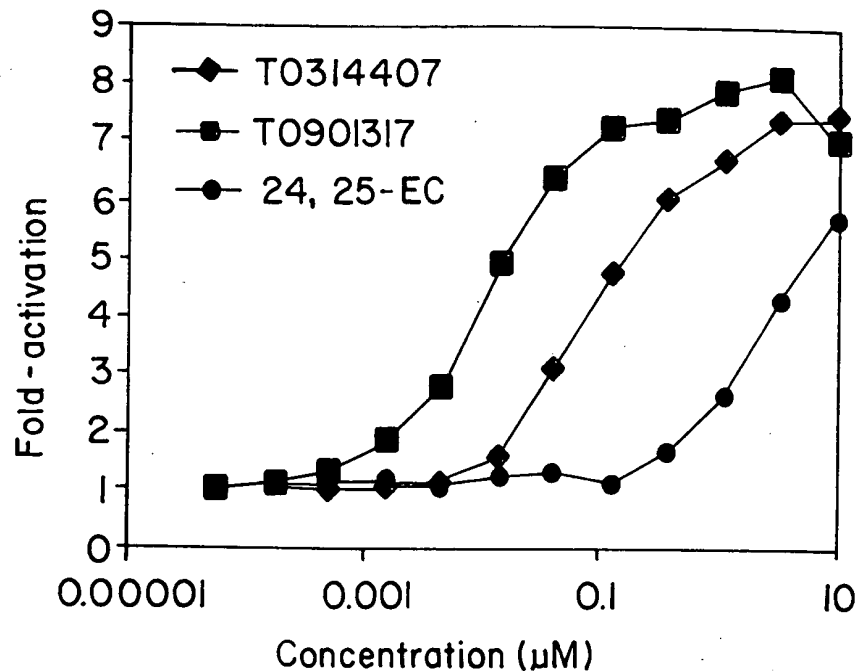
FIG. 6.



7/12

+

A



B

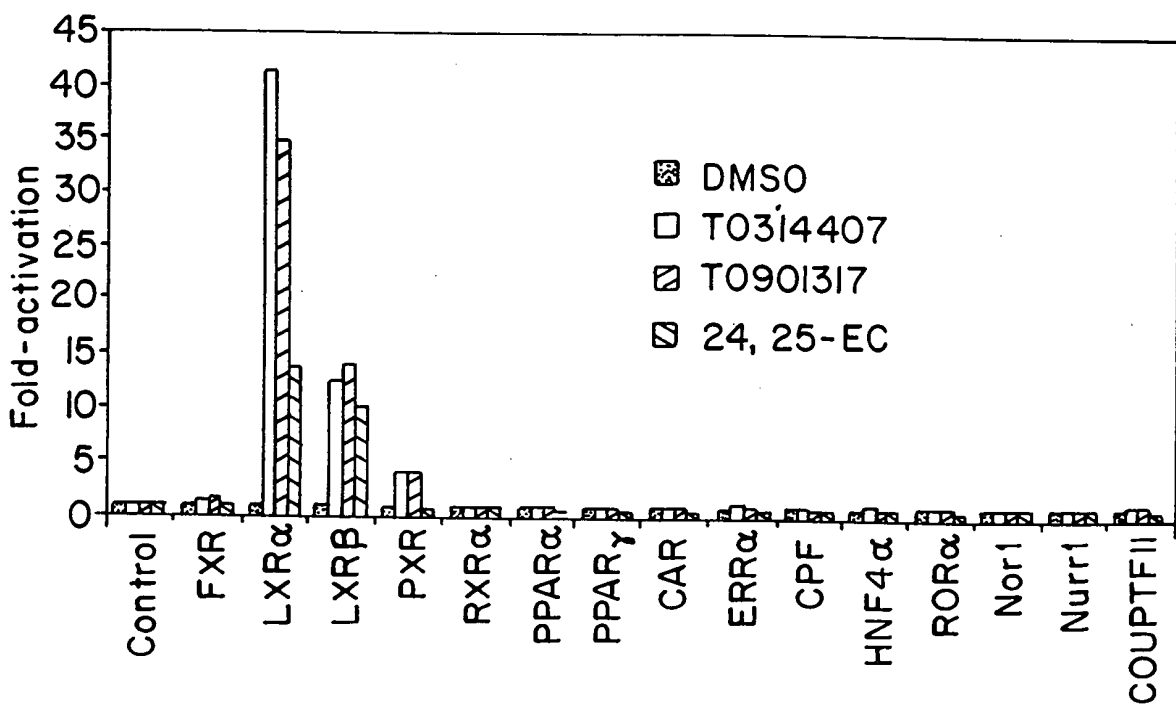


FIG. 7.

BEST AVAILABLE COPY

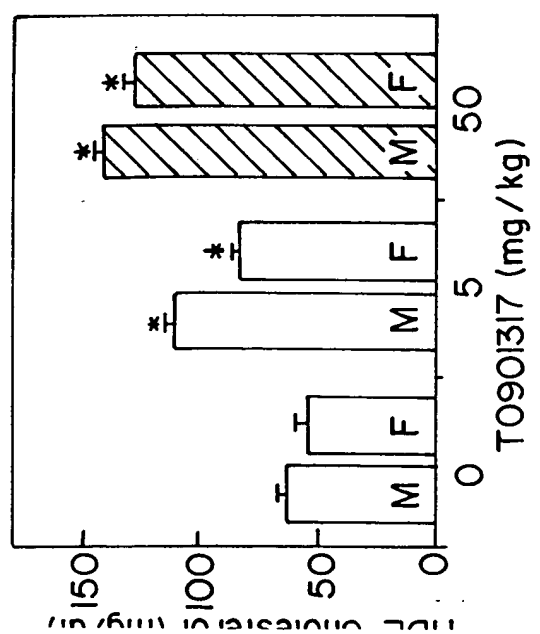
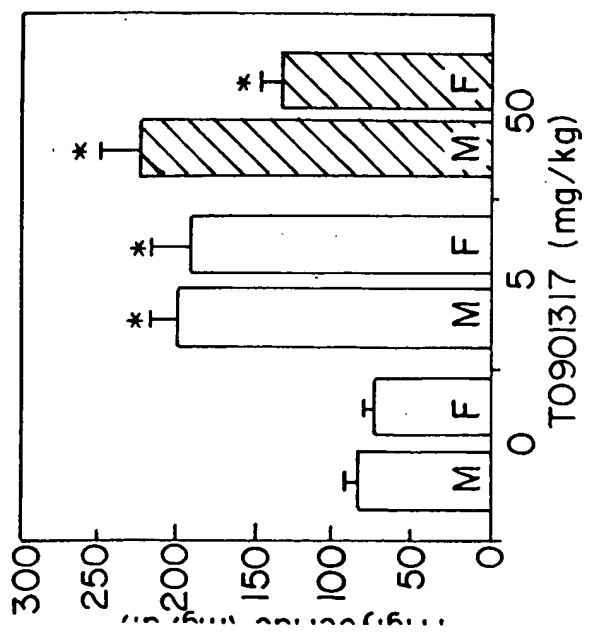
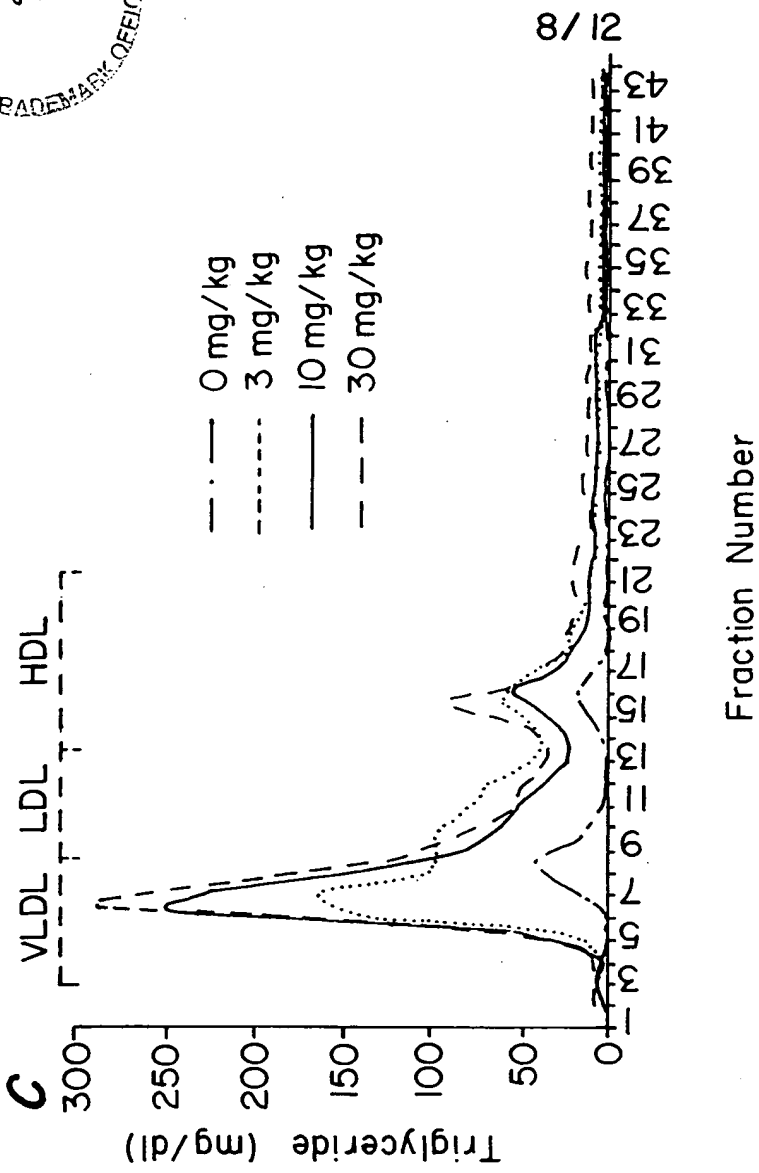
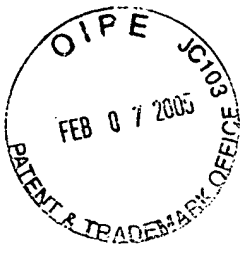


FIG. 8.

BEST AVAILABLE COPY

+



9/12

+

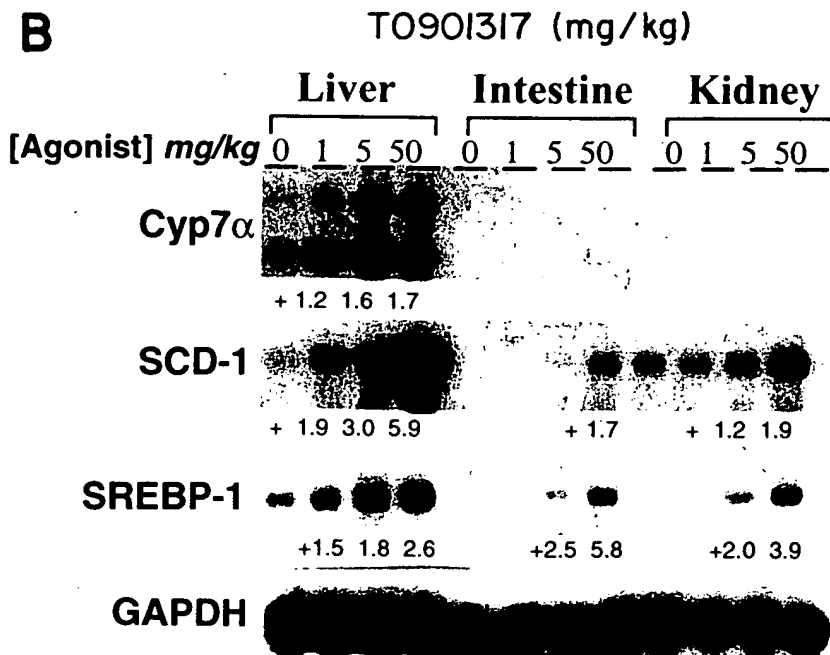
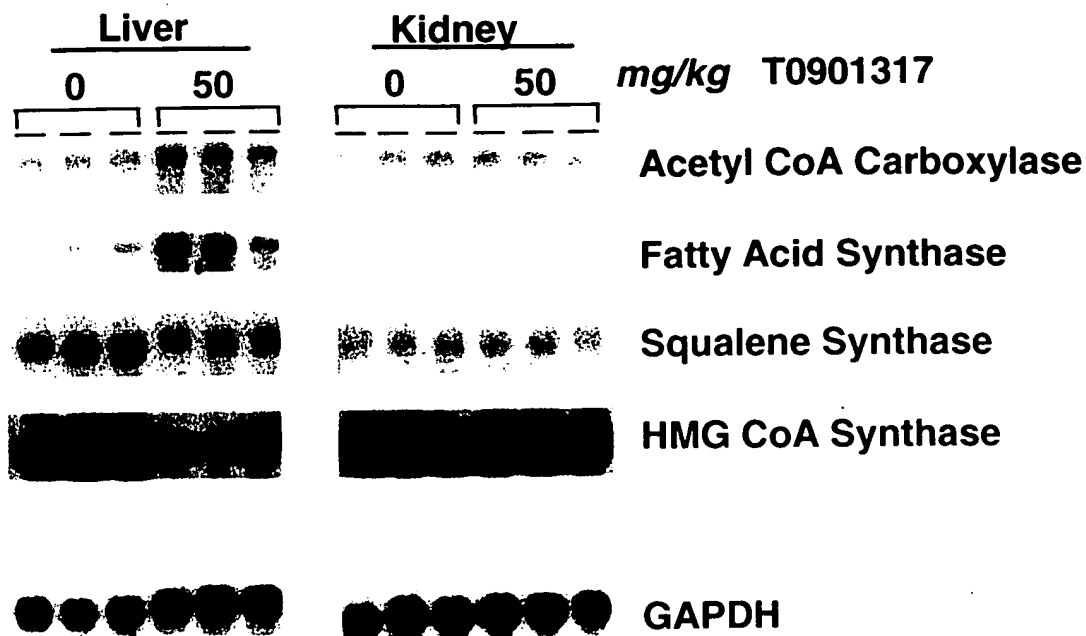


FIG. 9

BEST AVAILABLE COPY

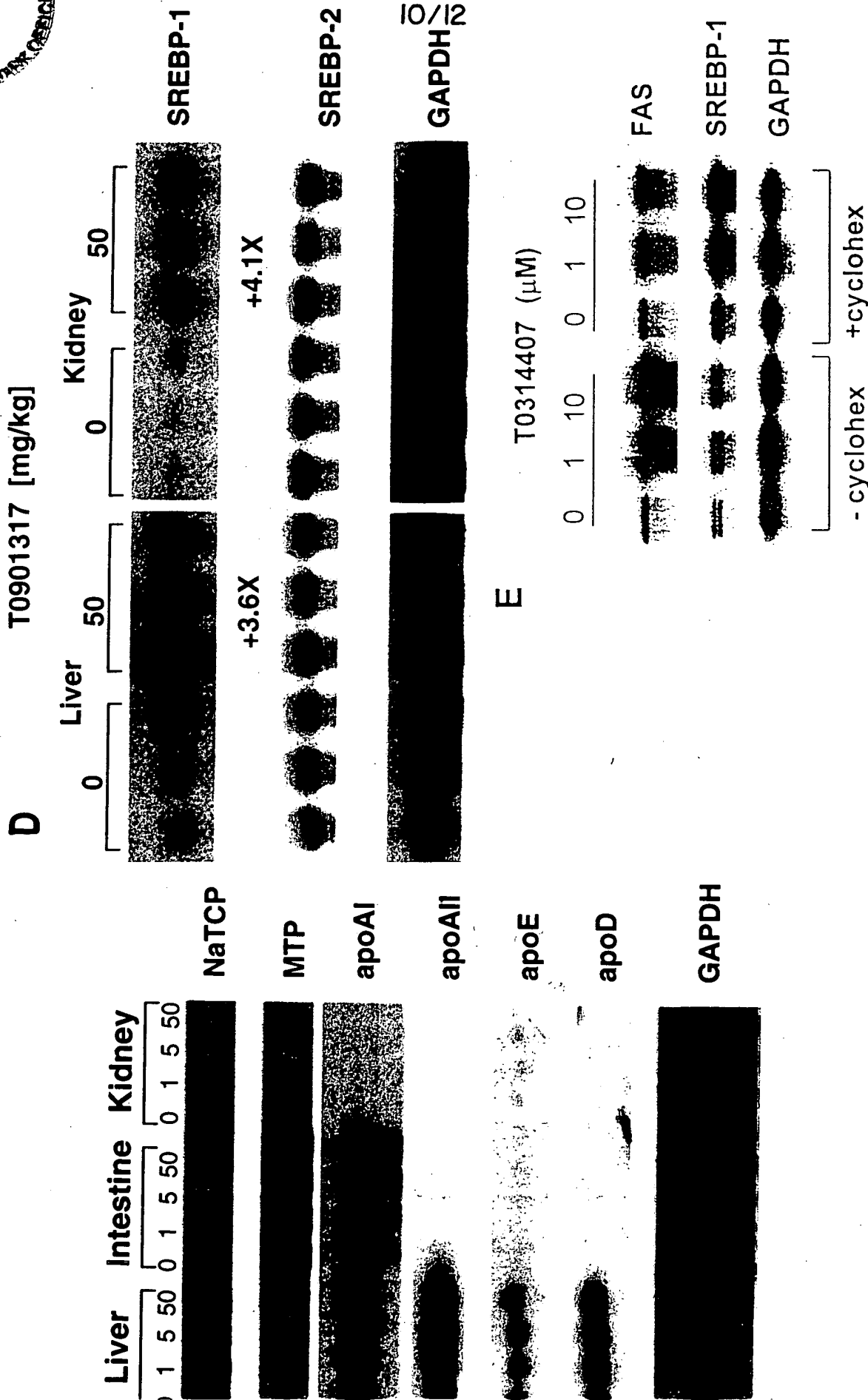


FIG. 9. (Continued)

BEST AVAILABLE COPY

+

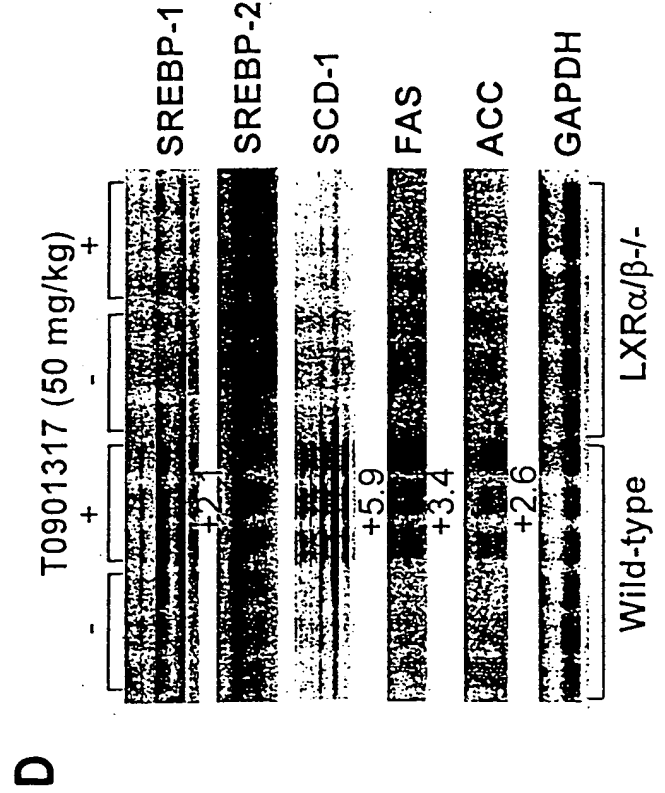
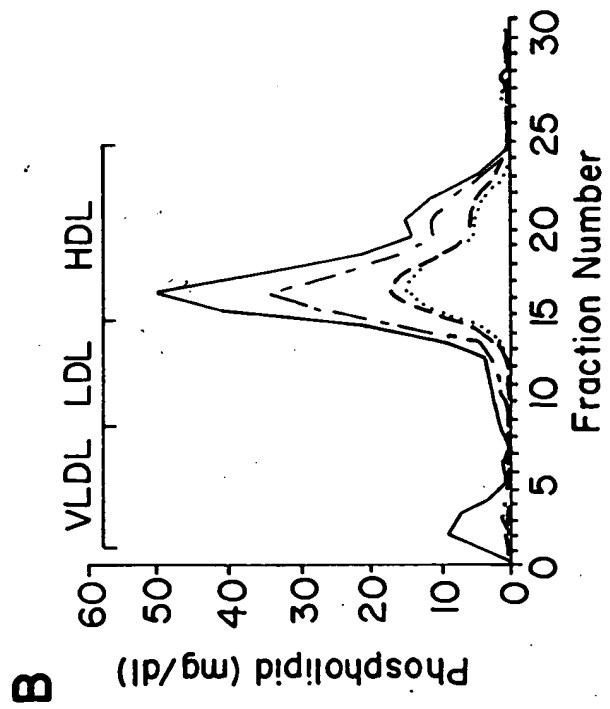
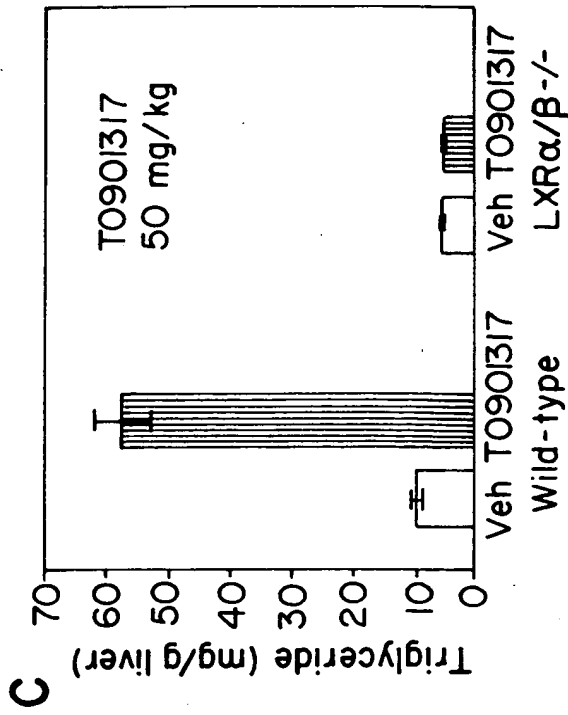
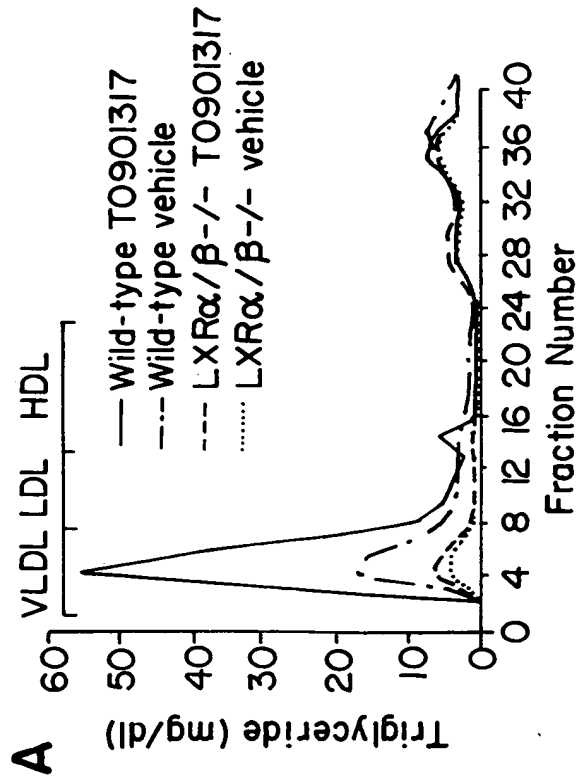
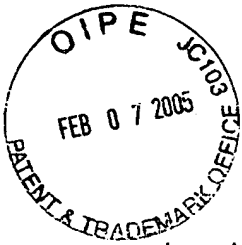


FIG. 10.



Gene/Probe	Primer Set	Primer Sequence	PCR Product Length
etyl CoA carboxylase	5'	TACCTGTGGGACAGCAACCA	521
	3'	TGGTCGACAGCAAGGGAA	
ty acid synthase	5'	CCCGATGGGGTTTCATC	493
	3'	GATCCCTCTGGGTGTCCC	
ualene synthase	5'	CGTGCAGTGCTTGAATGAACT	288
	3'	TTGGGGATCCGGTGATAAAT	
MG CoA synthase	5'	CCCAGCAGAGGTTTTCTACAA	1285
	3'	AATTCCCTCAGGGGACATGC	
REBP-1	5'	TCA ACAACCAAGACAGTGACTTCCCTGGCC	1028
	3'	GTTCTCCTGCTTGAGCTTCTGGTTGCTGTG	
CP	5'	AGCAAGATCAAGGCTCACTTCT	405
	3'	ATAGTGTGGCCTTTTGGACTTC	
TP	5'	TTCTCTGCTTCTTCTCCCTCCTA	403
	3'	GGCTCGTTTTTCATAGGAGTAGA	
oA-I	5'	GGCAGAGACTATGTGTCCAGTTTGA	564
	3'	GTCATCCAGCGGGTTTGGCCTTCTC	
oA-II	5'	ATAGTCTGCCATCATGAAGCTG	406
	3'	GAGAAACAGGCAGAGGTTAGG	
oE	5'	CCGTGCTGTTGGTCACATT	1014
	3'	TTATTAAGCAAGGGCCACCA	

FIG. 11.